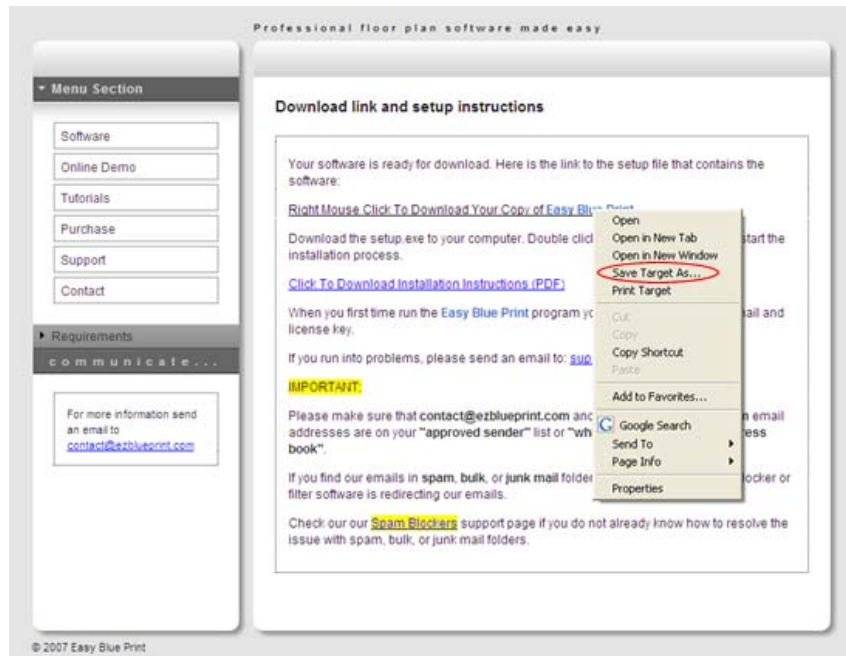
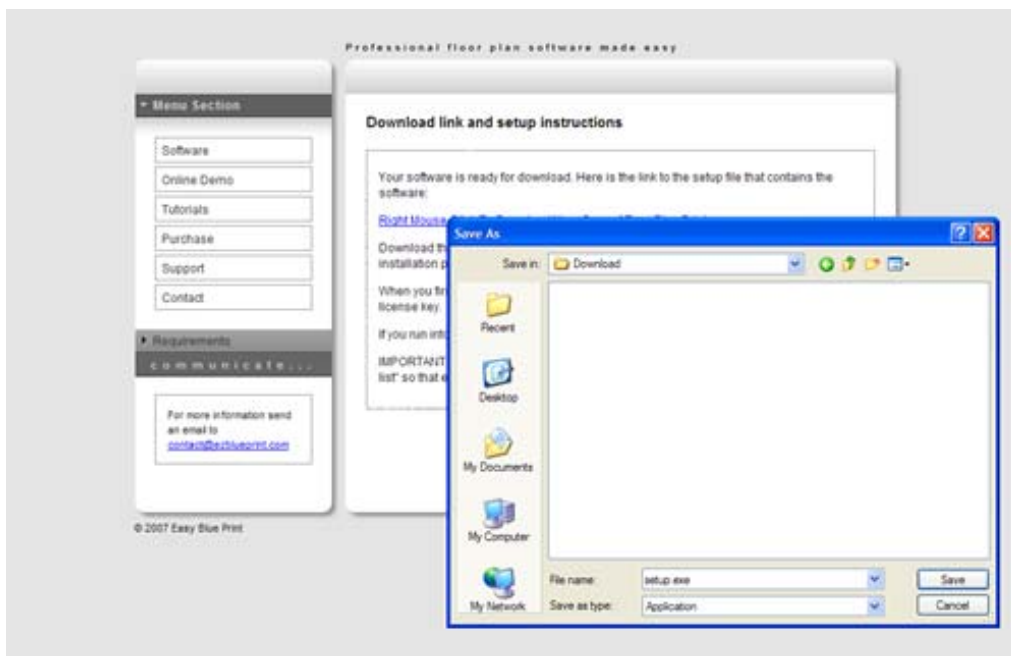


How do I install my software?

"Right mouse-click" on the link you want to download from. A menu will popup, which is similar to the one below (in Netscape, choose "Save Links As...").

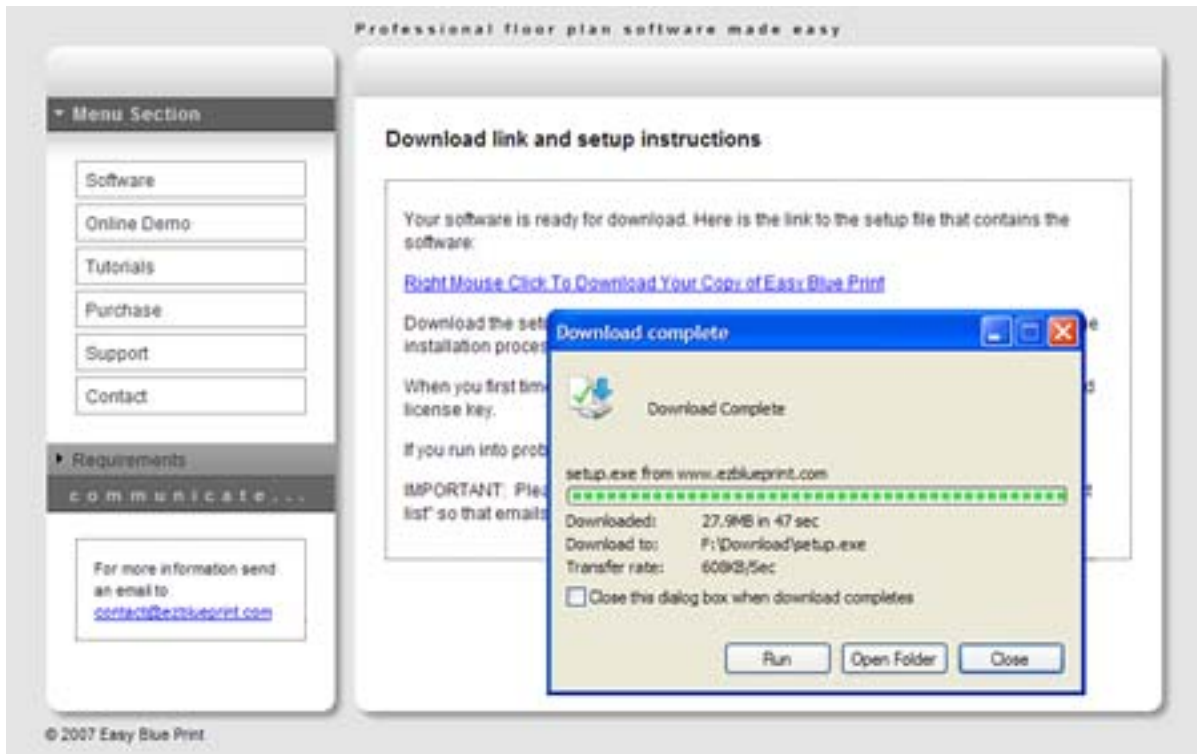


Once you selected "Save Target As..." or "Save Links As..." a download screen will come up, asking you where you want to save the file to your computer.

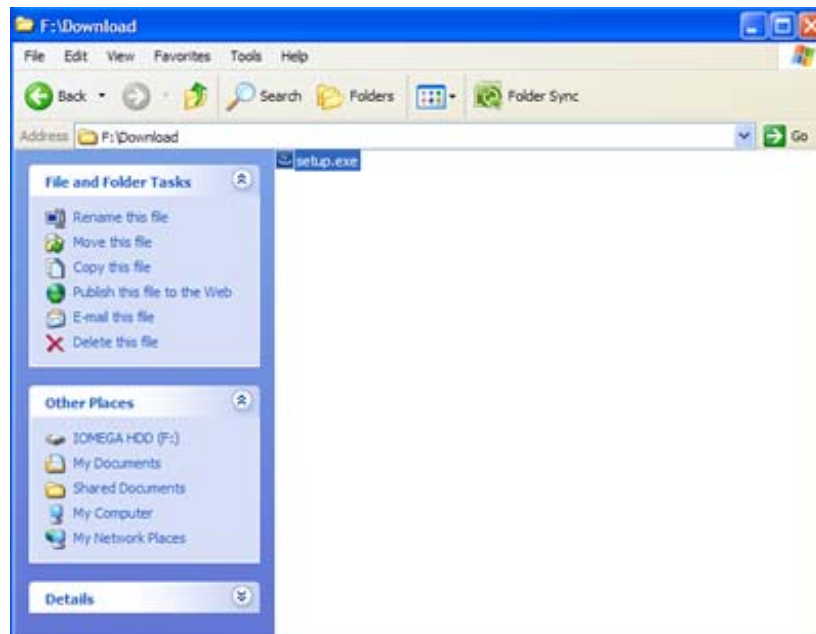


How do I install my software?

It is suggested you save the file to your "Desktop" or another folder you can easily find to quickly locate it once the download is complete. Download the setup.exe file.

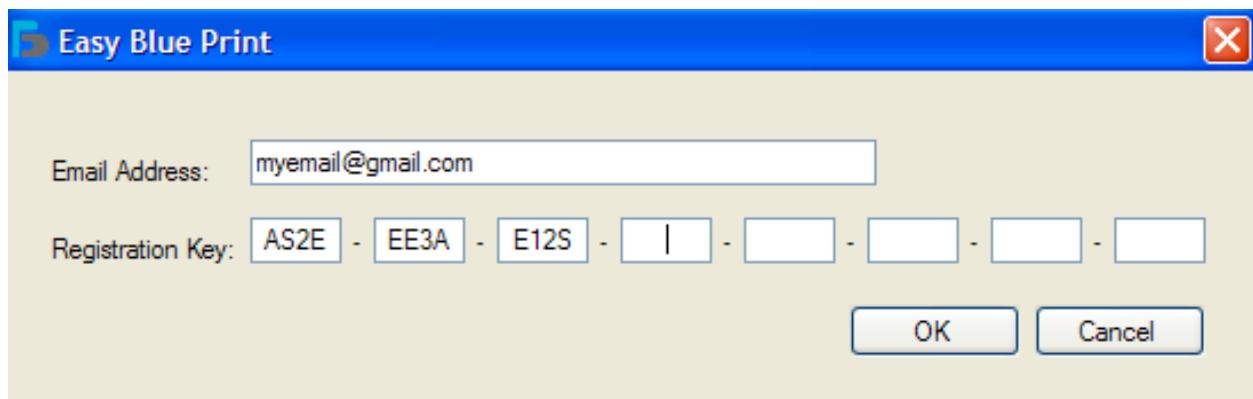


Run the setup.exe file (double click on the setup.exe to start the installation process).



How do I install my software?

When you first time run the Easy Blue Print program you will be asked for your email and license key.



The image shows a screenshot of a software registration dialog box titled "Easy Blue Print". The dialog box has a blue header bar with the title and a close button (X) in the top right corner. The main area is light beige and contains two input fields. The first field is labeled "Email Address:" and contains the text "myemail@gmail.com". The second field is labeled "Registration Key:" and contains a sequence of seven boxes: "AS2E", "EE3A", "E12S", a box with a vertical bar "|", and three empty boxes, all separated by hyphens. At the bottom right of the dialog box are two buttons: "OK" and "Cancel".